

OS | RM

OPEN SOURCE RISK MANAGEMENT



Silhouette™ Code Scanner

Open Source Risk Management developed its proprietary Silhouette code scanner to enable organizations to identify Open Source risk within their code base. Silhouette scans both source code and binaries to identify:

- Common Open Source projects used within the code base
- How the Open Source is used, for example whether it is statically or dynamically linked
- Whether the code base contains significant (and therefore possibly copyrightable) Open Source inline functions or macros
- Whether the Open Source code carries the appropriate copyright and license notices

Silhouette identifies risks created through inadvertent misuse of Open Source code. Because Silhouette identifies these risks at a macro level with few false positives, it is able to produce output that is more manageable and much easier to review than that of other tools.

Silhouette Reports

- Matched Open Source Projects
- Matched Open Source Files
- Matched Open Source Libraries
- Copyright and License Notices, including Open Source and possible third-party proprietary code

Silhouette produces scanning data that can be printed-out and analyzed, and/or imported directly into third-party license-management tools.

Project	Direct Uses	Include Uses	OS Project	License
0103-example-1.3.4-1.1	16		GPL, QPL	
3 wextk-devel-2.5.1-1.5	150		GPL	
01sw-prolog-5.4.6-4	197		GPL, LGPL	
01m-1.1.2-9	5		GPL	
01lib2-devel-2.6.3-4	23		LGPL	
1lib-devel-0.6.5-347	130		LGPL	
1lib-devel-2.3.4-23	148		GPL, LGPL	
01sclab-3.0-7	154		Other License(s), see package	
01mine-devel-20050211-4	5		LGPL, Other License(s), see package	
01openmotif-devel-2.2.3-11	6		Other License(s), see package	
01fluidsynth-devel-1.0.5-3	4		LGPL	
01guit-1.6-7.5	11		GPL	
01perl-5.8.0-5	12		GPL, Artistic License	
01hgo-devel-1.3.5-5	30		GPL	
01vdr-1.2.0-88	6		GPL	
01dx-4.2.0-371	18		IBM Public License	
11stresstest-devel-8.0.1-6	23		RFD	
21gdkmm24-devel-2.4.11-3	19		LGPL	
01kdevelop3-3.2.0-8	17		GPL	
01reiserprogs-1.0.3-3	8		GPL	
01ppl4-devel-4.3.10-14	6		Other uncritical OpenSource License	
11gcom-devel-0.2-3	0		LGPL	
11libwck-devel-2.10.0-4	0		GPL	

Silhouette Matched Open Source Projects Report



To learn more about how OSRM can help you maximize the value of Open Source use, please contact sales@osriskmanagement.com or call us at (919) 806-4409.

Silhouette Repository

Silhouette compares the scanned code base to OSRM's massive proprietary repository of Open Source code. Programming languages supported by OSRM's repository include:

- C
- C++
- C#
- Visual Basic
- Perl
- Python
- PHP

The repository can also be supplemented or customized for specialized scans of other programming languages.

The repository includes those Open Source projects that are most likely to be found in an audited code base and which represent the most significant risk if used inappropriately (e.g., GPL licensed code).

If the code base makes use of or may make use of specialized Open Source, OSRM can identify the relevant projects and load those into the repository prior to running the Silhouette scan.

Silhouette Speed

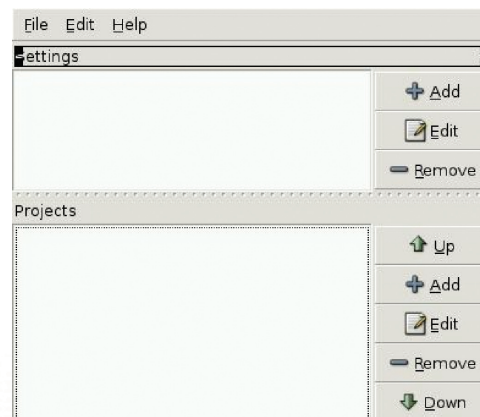
Silhouette can scan 10 GB of source code in under three hours, running significantly faster than comparable tools.

Silhouette's output is designed to make comprehensive code-scanning efficient and cost-effective.

Silhouette is the ideal choice for projects requiring rapid turn-around, such as due diligence during M&A transactions.

Silhouette Certification

Silhouette is the only scanning tool that has been evaluated and certified by independent risk experts at Lloyd's of London Member Kiln plc. Silhouette is the only scanning tool approved for underwriting insurance covering Open Source risks.



Silhouette Configuration